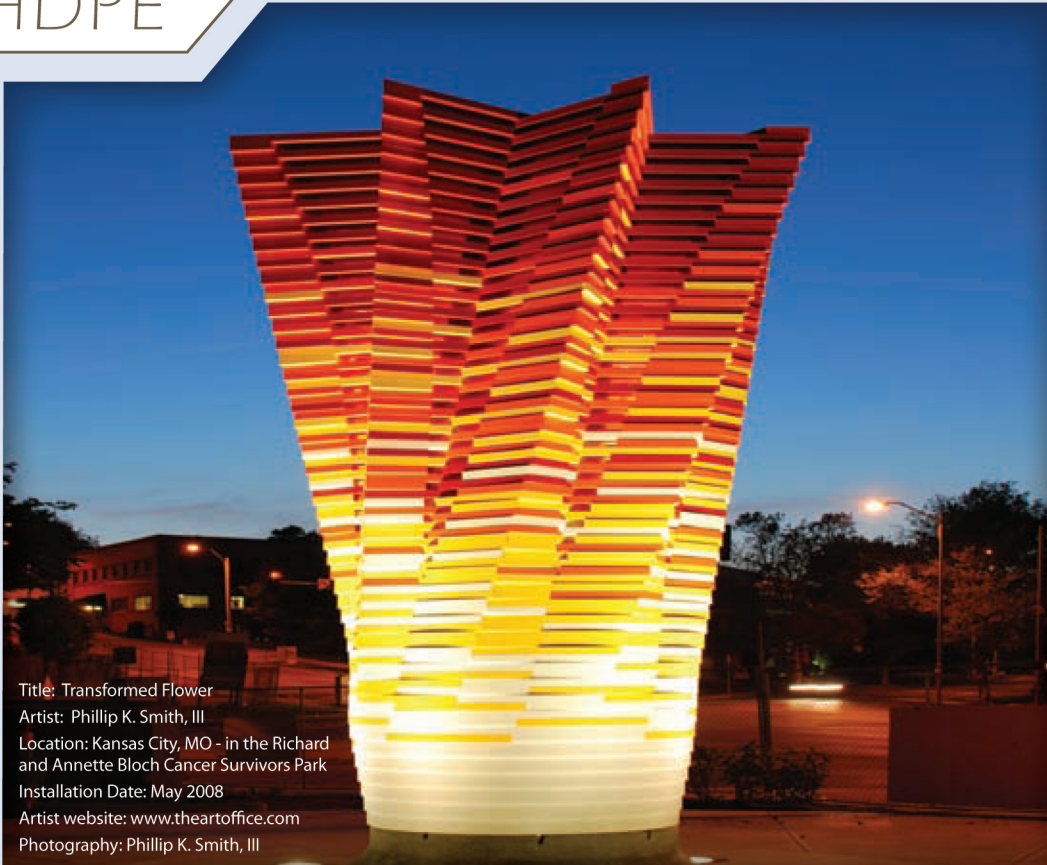




# POLYMER INDUSTRIES

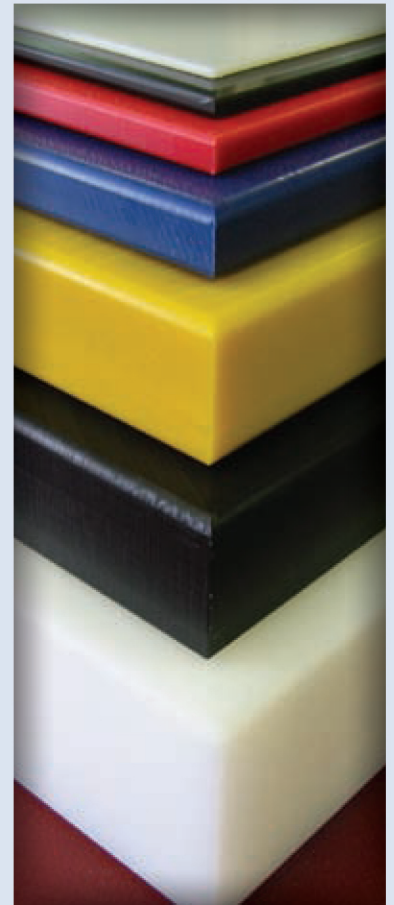
GEARED TOWARDS EXCELLENCE

**DENSETEC®**  
HDPE



Title: Transformed Flower  
Artist: Phillip K. Smith, III  
Location: Kansas City, MO - in the Richard and Annette Bloch Cancer Survivors Park  
Installation Date: May 2008  
Artist website: [www.theartoffice.com](http://www.theartoffice.com)  
Photography: Phillip K. Smith, III

High Density Polyethylene Sheet – PE 300



## APPLICATIONS

Furniture

Tank Liners

Chute Liners

Wood Replacement

Silo and Hopper Liners

Light Duty Chain Guides

Art

Water Storage

Machine Parts

Cosmetic Applications

Secondary Containment

Valve and Pump Parts

Support Braces

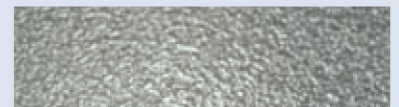
Structural Tanks

Chemical Tank Covers

Food Processing Facilities

Food Processing Equip.

Poultry Processing Equip.



Orange Peel Finish



Smooth Finish



Planed Finish



**DENSETEC®**  
HDPE



## FEATURES

|                             |                      |
|-----------------------------|----------------------|
| Stain resistant             | Durable              |
| Lightweight                 | Odor Resistant       |
| Graffiti resistant          | Abrasion resistant   |
| Moisture resistant          | Easily fabricated    |
| RoHS & Reach compliant      | Chemical resistant   |
| Low coefficient of friction | High impact strength |

## COLORS

Natural\*                      Black  
\*FDA approved and NSF Standard 51 certified

## SIZES

| STANDARD:     | <u>Extruded</u><br>inch / mm  | <u>Compression Molded</u><br>inch / mm |
|---------------|---|--|
| Thickness     | 0.03 - 1 / 0.8 - 25   | Not<br>a<br>Standard<br>Product        |
| Sheet Size    | 48 x 96 / 1220 x 2440<br>48 x 120 / 1220 x 3050<br>60 x 120 / 1525 x 3050 |  |
| CAPABILITIES: | <u>Extruded</u><br>inch / mm  | <u>Compression Molded</u><br>inch / mm |
| Thickness     | 0.03 - 1.25 / 0.8 - 32  | 0.5 - 4 / 12.7 - 100                   |
| Width         | 45 - 144 / 1140 - 3655  | 48 - 96 / 1220 - 2440                  |
| Length        | Up to 480 / 12200   | Up to 240 / 6100                       |

## FINISH

Smooth - standard extruded finish  
Orange peel - available extruded finish  
Planed - standard compression molded finish

Note: Other sizes, colors, formulations and forming grade available upon request

Distributed by:

## POLYMER INDUSTRIES

**HEADQUARTERS:** PO Box 32; 10526 AL Hwy 40 Henagar, AL 35978 USA **Ph:** (256) 657-5197 **Fax:** (256) 657-5189 **Toll Free:** (877) 489-0039  
**NYTEF DIVISION:** 633 Dunksferry Road Bensalem, PA 19020 USA **Ph:** (215) 638-0800 **Fax:** (215) 638-7674  
**AVALANCHE LINER DIVISION:** 3273 West 5th Court Oxford, WI 53952 USA **Ph:** (608) 586-5100 **Fax:** (608) 586-5175 **Toll Free:** (877) 522-2382  
**ULTRAPOLY DIVISION:** 2404 Center Street Tacoma, WA 98409 USA **Ph:** (253) 272-1217 **Fax:** (253) 272-1457 **Toll Free:** (800) 872-8469  
**WEST COAST DISTRIBUTION:** 4419 West 1980 South Salt Lake City, UT 84104 USA **Ph:** (801) 363-3109 **Fax:** (801) 364-4381 **Toll Free:** (800) 872-8469  
**MIDWEST DISTRIBUTION:** 694 Veterans Pkwy Bolingbrook, IL 60440 USA **Ph:** (800) 646-9833 **Fax:** (630) 296-3011  
**NYTEF WEST COAST DISTRIBUTION:** 13185 Imperial Highway Whittier, CA 90605 USA **Ph:** (562) 946-8723 **Fax:** (562) 946-4497  
**ASIA PACIFIC:** Plot No.'s 160 c/o & 161 c/o Cherlapally Ida Phase II HCL Post Office Hyderabad - 500 051 India **Ph:** 91 40 2726 3375 **Fax:** 91 40 2726 1219

Rev 4