



POLYMER INDUSTRIES

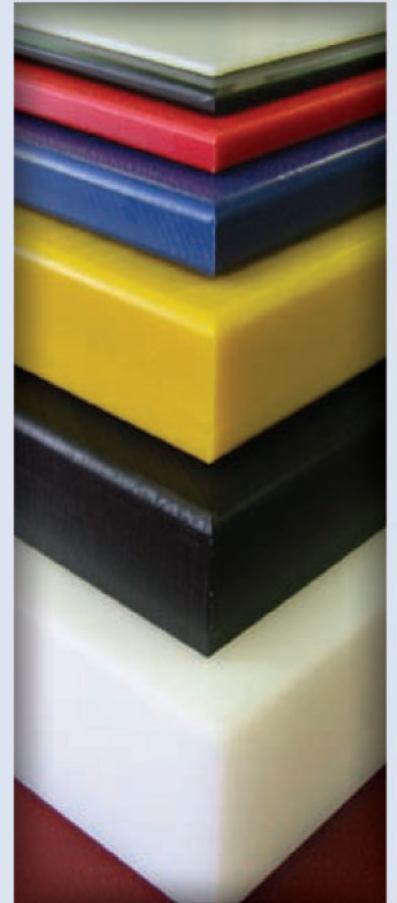
GEARED TOWARDS EXCELLENCE

DENSETEC®
HDPE



Title: Transformed Flower
Artist: Phillip K. Smith, III
Location: Kansas City, MO - in the Richard and Annette Bloch Cancer Survivors Park
Installation Date: May 2008
Artist website: www.theartoffice.com
Photography: Phillip K. Smith, III

High Density Polyethylene Sheet – PE 300



APPLICATIONS

Furniture

Tank Liners

Chute Liners

Wood Replacement

Silo and Hopper Liners

Light Duty Chain Guides

Art

Water Storage

Machine Parts

Cosmetic Applications

Secondary Containment

Valve and Pump Parts

Support Braces

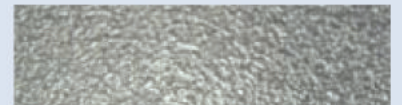
Structural Tanks

Chemical Tank Covers

Food Processing Facilities

Food Processing Equip.

Poultry Processing Equip.



Orange Peel Finish



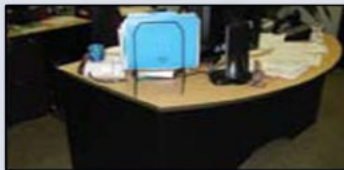
Smooth Finish



Planed Finish



DENSETEC®
HDPE



FEATURES

Stain resistant	Durable
Lightweight	Odor Resistant
Graffiti resistant	Abrasion resistant
Moisture resistant	Easily fabricated
RoHS & Reach compliant	Chemical resistant
Low coefficient of friction	High impact strength

COLORS

Natural* Black
*FDA approved and NSF Standard 51 certified

SIZES

STANDARD:	<u>Extruded</u> inch / mm	<u>Compression Molded</u> inch / mm
Thickness	0.03 - 1 / 0.8 - 25	Not a Standard Product
Sheet Size	48 x 96 / 1220 x 2440 48 x 120 / 1220 x 3050 60 x 120 / 1525 x 3050	
CAPABILITIES:	<u>Extruded</u> inch / mm	<u>Compression Molded</u> inch / mm
Thickness	0.03 - 1.25 / 0.8 - 32	0.5 - 4 / 12.7 - 100
Width	45 - 144 / 1140 - 3655	48 - 96 / 1220 - 2440
Length	Up to 480 / 12200	Up to 240 / 6100

FINISH

Smooth - standard extruded finish
Orange peel - available extruded finish
Planed - standard compression molded finish

Note: Other sizes, colors, formulations and forming grade available upon request

Distributed by:

POLYMER INDUSTRIES

HEADQUARTERS: PO Box 32; 10526 AL Hwy 40 Henagar, AL 35978 USA **Ph:** (256) 657-5197 **Fax:** (256) 657-5189 **Toll Free:** (877) 489-0039
NYTEF DIVISION: 633 Dunksferry Road Bensalem, PA 19020 USA **Ph:** (215) 638-0800 **Fax:** (215) 638-7674
AVALANCHE LINER DIVISION: 3273 West 5th Court Oxford, WI 53952 USA **Ph:** (608) 586-5100 **Fax:** (608) 586-5175 **Toll Free:** (877) 522-2382
ULTRAPOLY DIVISION: 2404 Center Street Tacoma, WA 98409 USA **Ph:** (253) 272-1217 **Fax:** (253) 272-1457 **Toll Free:** (800) 872-8469
WEST COAST DISTRIBUTION: 4419 West 1980 South Salt Lake City, UT 84104 USA **Ph:** (801) 363-3109 **Fax:** (801) 364-4381 **Toll Free:** (800) 872-8469
MIDWEST DISTRIBUTION: 694 Veterans Pkwy Bolingbrook, IL 60440 USA **Ph:** (800) 646-9833 **Fax:** (630) 296-3011
NYTEF WEST COAST DISTRIBUTION: 13185 Imperial Highway Whittier, CA 90605 USA **Ph:** (562) 946-8723 **Fax:** (562) 946-4497
ASIA PACIFIC: Plot No.'s 160 c/o & 161 c/o Cherlapally Ida Phase II HCL Post Office Hyderabad - 500 051 India **Ph:** 91 40 2726 3375 **Fax:** 91 40 2726 1219

Rev 4