



DENSETEC® CUTTING BOARD



High Density Polyethylene Sheet- PE 300

APPLICATIONS

Buffets

Salad Bars

Industrial Cutting Surfaces

Residential Cutting Boards

Commercial Cutting Boards

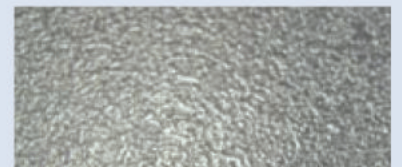
Shelving

Food Stations

Butcher Blocks

Food Preparation Areas

Food Processing Equipment



Orange Peel Finish



NSF Logo Finish



Smooth Finish



DENSETEC® CUTTING BOARD



Residential



Commercial



Industrial

FEATURES

- | | |
|---|--|
| Non porous | Mildew resistant |
| Will not dull knife blade | Moisture resistant |
| Will not absorb bacteria | Stain and odor resistant |
| Easy to clean and fabricate | NSF Standard 51 certified |
| RoHS and REACH compliant | Chemical and acid resistant |
| USDA and FDA approved for food applications | Will not splinter, chip, swell, rot or crack |

COLORS

- | | |
|---------|-------|
| Natural | Green |
| Red | Beige |
| Yellow | Black |
| Blue | |

SIZES

	<u>Extruded</u> inch / mm
Thickness	0.25 - 1.25 / 6 - 32
Sheet Size	48 x 96 / 1220 x 2440 48 x 120 / 1220 x 3050 60 x 120 / 1525 x 3050

FINISH

- Orange peel - standard
- NSF logo - available
- Smooth - available

Note: Other sizes and colors available upon request

Distributed by:

POLYMER INDUSTRIES

HEADQUARTERS: PO Box 32; 10526 AL Hwy 40 Henagar, AL 35978 USA **Ph:** (256) 657-5197 **Fax:** (256) 657-5189 **Toll Free:** (877) 489-0039
NYTEF DIVISION: 633 Dunksferry Road Bensalem, PA 19020 USA **Ph:** (215) 638-0800 **Fax:** (215) 638-7674
AVALANCHE LINER DIVISION: 3273 West 5th Court Oxford, WI 53952 USA **Ph:** (608) 586-5100 **Fax:** (608) 586-5175 **Toll Free:** (877) 522-2382
ULTRAPOLY DIVISION: 2404 Center Street Tacoma, WA 98409 USA **Ph:** (253) 272-1217 **Fax:** (253) 272-1457 **Toll Free:** (800) 872-8469
WEST COAST DISTRIBUTION: 4419 West 1980 South Salt Lake City, UT 84104 USA **Ph:** (801) 363-3109 **Fax:** (801) 364-4381 **Toll Free:** (800) 872-8469
MIDWEST DISTRIBUTION: 694 Veterans Pkwy Bolingbrook, IL 60440 USA **Ph:** (800) 646-9833 **Fax:** (630) 296-3011
NYTEF WEST COAST DISTRIBUTION: 13185 Imperial Highway Whittier, CA 90605 USA **Ph:** (562) 946-8723 **Fax:** (562) 946-4497
ASIA PACIFIC: Plot No.'s 160 c/o & 161 c/o Cherlapally Ida Phase II HCL Post Office Hyderabad - 500 051 India **Ph:** 91 40 2726 3375 **Fax:** 91 40 2726 1219