



POLYMER INDUSTRIES

GEARED TOWARDS EXCELLENCE

DENSETEC[®]
SIGN



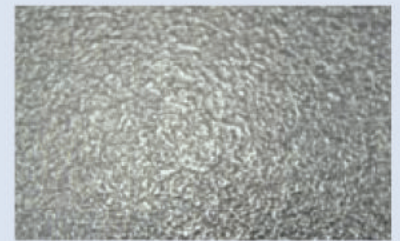
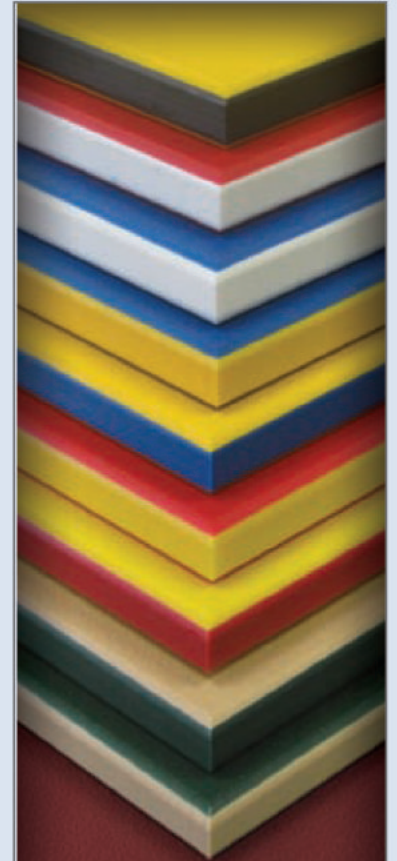
<http://www.playcraftsystems.com/HDPE>

High Density Polyethylene Sheet – PE 300

APPLICATIONS

- | | | |
|---------------------|-----------------|------------------|
| Pools | Parks | Marinas |
| Signage | Churches | Schools |
| Advertising | Ski Slopes | Playgrounds |
| Golf Courses | Water Parks | Nature Trails |
| Campgrounds | Condominiums | Municipalities |
| Apartment Buildings | Amusement Parks | Sports Complexes |

Any Outdoor Application which requires UV inhibitors



Orange Peel Finish



DENSETEC®
SIGN



FEATURES

- Easily cleaned
- Graffiti resistant
- Resists scratches
- Will not delaminate
- RoHS & REACH compliant
- UV stabilized
- Easily fabricated
- Will not swell or rot
- Will not crack or chip
- Never needs painting

COLORS

- Red/White/Red*
- Red/Yellow/Red*
- Green/Beige/Green*
- Yellow/Blue/Yellow*
- Yellow/Black/Yellow
- Blue/White/Blue*
- Blue/Yellow/Blue*
- Beige/Green/Beige*
- Yellow/Red/Yellow*
- Black/White/Black

*FDA approved colors

SIZES

	<u>Extruded</u> inch / mm
Thickness	0.5 & 0.75 / 13 & 19
Sheet Size	48 x 96 / 1220 x 2440 48 x 120 / 1220 x 3050

FINISH

Orange peel

Note: Other sizes and colors available upon request

Distributed by:

POLYMER INDUSTRIES

HEADQUARTERS: PO Box 32; 10526 AL Hwy 40 Henagar, AL 35978 USA **Ph:** (256) 657-5197 **Fax:** (256) 657-5189 **Toll Free:** (877) 489-0039

NYTEF DIVISION: 633 Dunksferry Road Bensalem, PA 19020 USA **Ph:** (215) 638-0800 **Fax:** (215) 638-7674

AVALANCHE LINER DIVISION: 3273 West 5th Court Oxford, WI 53952 USA **Ph:** (608) 586-5100 **Fax:** (608) 586-5175 **Toll Free:** (877) 522-2382

ULTRAPOLY DIVISION: 2404 Center Street Tacoma, WA 98409 USA **Ph:** (253) 272-1217 **Fax:** (253) 272-1457 **Toll Free:** (800) 872-8469

WEST COAST DISTRIBUTION: 4419 West 1980 South Salt Lake City, UT 84104 USA **Ph:** (801) 363-3109 **Fax:** (801) 364-4381 **Toll Free:** (800) 872-8469

MIDWEST DISTRIBUTION: 694 Veterans Pkwy Bolingbrook, IL 60440 USA **Ph:** (800) 646-9833 **Fax:** (630) 296-3011

NYTEF WEST COAST DISTRIBUTION: 13185 Imperial Highway Whittier, CA 90605 USA **Ph:** (562) 946-8723 **Fax:** (562) 946-4497

ASIA PACIFIC: Plot No.'s 160 c/o & 161 c/o Cherlapally Ida Phase II HCL Post Office Hyderabad - 500 051 India **Ph:** 91 40 2726 3375 **Fax:** 91 40 2726 1219

Rev 4