



# POLYMER INDUSTRIES

GEARED TOWARDS EXCELLENCE

**DENSETEC®**  
**PLAY**



High Density Polyethylene Sheet – PE 300

## APPLICATIONS

Signs

Displays

Benches

Playground Panels

Hockey Rink Kick Plates

Tables

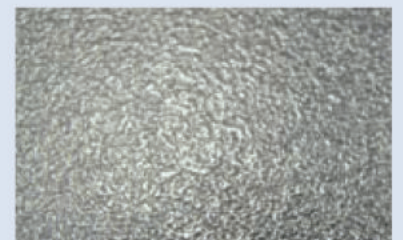
Shelves

Furniture

Playground Ladders

Hockey Rink Dasher Boards

Any Outdoor Application which requires UV inhibitors



Orange Peel Finish



**DENSETEC®**  
**PLAY**



## FEATURES

- |                        |                        |
|------------------------|------------------------|
| Easily cleaned         | UV stabilized          |
| Graffiti resistant     | Easily fabricated      |
| Resists scratches      | Will not swell or rot  |
| Will not delaminate    | Will not crack or chip |
| RoHS & REACH compliant | Never needs painting   |

## COLORS

- |         |        |
|---------|--------|
| Red*    | Blue*  |
| Green*  | Beige* |
| Yellow* | White* |
| Black   |        |
- \*FDA approved colors

## SIZES

	<u>Extruded</u> inch / mm
Thickness	0.25 - 0.75 / 6 - 19
Sheet Size	48 x 96 / 1220 x 2440 48 x 120 / 1220 x 3050

## FINISH

- Orange peel

Note: Other sizes, colors and forming grade available upon request

Distributed by:

## POLYMER INDUSTRIES

**HEADQUARTERS:** PO Box 32; 10526 AL Hwy 40 Henagar, AL 35978 USA **Ph:** (256) 657-5197 **Fax:** (256) 657-5189 **Toll Free:** (877) 489-0039  
**NYTEF DIVISION:** 633 Dunksferry Road Bensalem, PA 19020 USA **Ph:** (215) 638-0800 **Fax:** (215) 638-7674  
**AVALANCHE LINER DIVISION:** 3273 West 5th Court Oxford, WI 53952 USA **Ph:** (608) 586-5100 **Fax:** (608) 586-5175 **Toll Free:** (877) 522-2382  
**ULTRAPOLY DIVISION:** 2404 Center Street Tacoma, WA 98409 USA **Ph:** (253) 272-1217 **Fax:** (253) 272-1457 **Toll Free:** (800) 872-8469  
**WEST COAST DISTRIBUTION:** 4419 West 1980 South Salt Lake City, UT 84104 USA **Ph:** (801) 363-3109 **Fax:** (801) 364-4381 **Toll Free:** (800) 872-8469  
**MIDWEST DISTRIBUTION:** 694 Veterans Pkwy Bolingbrook, IL 60440 USA **Ph:** (800) 646-9833 **Fax:** (630) 296-3011  
**NYTEF WEST COAST DISTRIBUTION:** 13185 Imperial Highway Whittier, CA 90605 USA **Ph:** (562) 946-8723 **Fax:** (562) 946-4497  
**ASIA PACIFIC:** Plot No.'s 160 c/o & 161 c/o Cherlapally Ida Phase II HCL Post Office Hyderabad - 500 051 India **Ph:** 91 40 2726 3375 **Fax:** 91 40 2726 1219

Rev 4